



95mm INSULATED DOORS

OPENING DOORS FOR YOUR FUTURE



ECONOMICAL

DURABLE

RELIABLE

EFFICIENT

COST EFFECTIVE

ATTRACTIVE

Our team has a combined total of over 50 years experience in the security door business.

We have been supplying trade customers for over 11 years.

We aim to provide excellent service...

- Quality products
- Short lead times
- Impeccable customer service
- Streamlined production process
- Excellent after sale support

Every door is bespoke to meet customer requirements. As the UK manufacturer, we personally see you right through from enquiry to installation!



**Based in North West England
operating from Edgworth, Bolton
providing service nationwide**

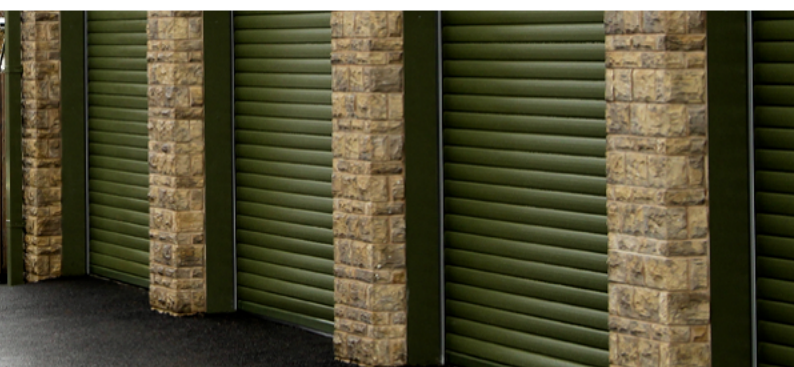


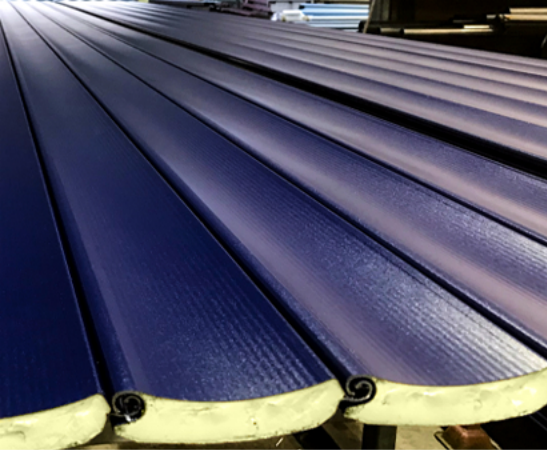
Designed with more than security in mind...

- For industrial, commercial and domestic use
- Hot injected polyurethane foam results in high density insulation compacted within each piece of lath, regulating indoor temperatures
- Full polyurethane foam-filled cavity insulation has superior thermal properties
- Super strong yet lightweight
- Superb acoustic dampening
- Excellent wind resistance
- Compact roll-up diameter



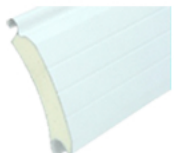
Every shutter is bespoke to match customer requirements for size and colour



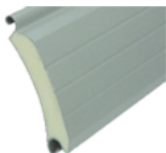


COLOUR CHART

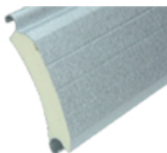
(more colours may be available)



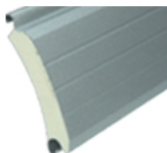
White
RAL 9003



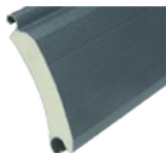
Goosewing
Grey
RAL 7038



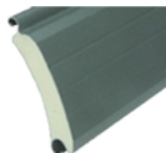
Galvanised



Silver
RAL 9006



Dark Grey
Nearest RAL
7011



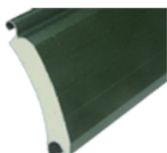
Merlin Grey
BS18 B25



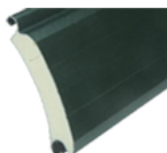
Moorland
Green
BS12 B21



Olive Green
RAL 6003



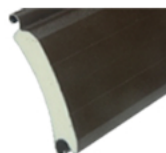
Dark Green
Nearest RAL
6009



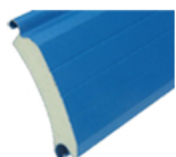
Juniper Green
BS12 B29



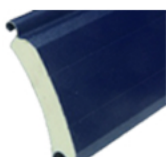
Golden Oak



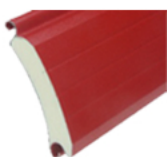
Van Dyke Brown
RAL 8014



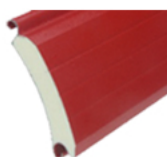
Solent Blue
BS18 E53



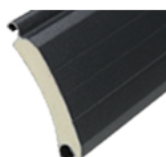
Sargasso
Nearest RAL
5003



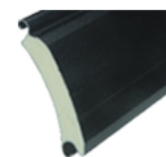
Chilli Red
RAL 3000



Red



Anthracite
RAL 7016



Black
RAL 9005



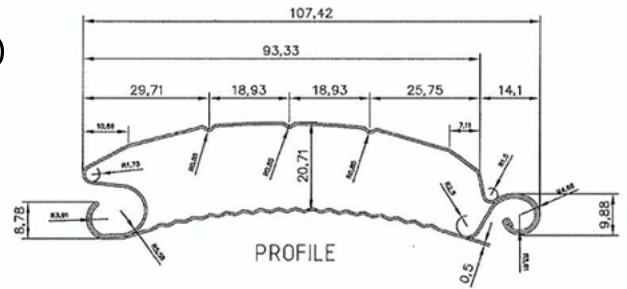
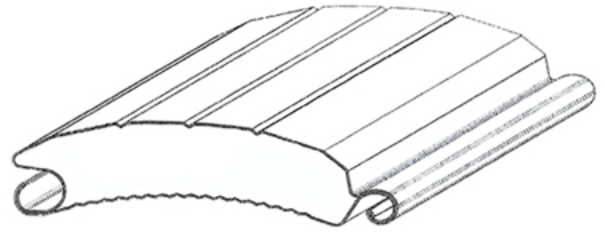


- Textured finish for added durability
- Curved inner and outer surfaces, promotes strength
- Structural grade galvanised coated steel to ensure long life span
- Laminated anti-scratch coating extending life span
- Laminated coating provides superior anti-scratch resistance compared to painted surfaces
- Top and bottom hooks are formed to allow a solid connection and quiet operation



BASIC SPECIFICATION

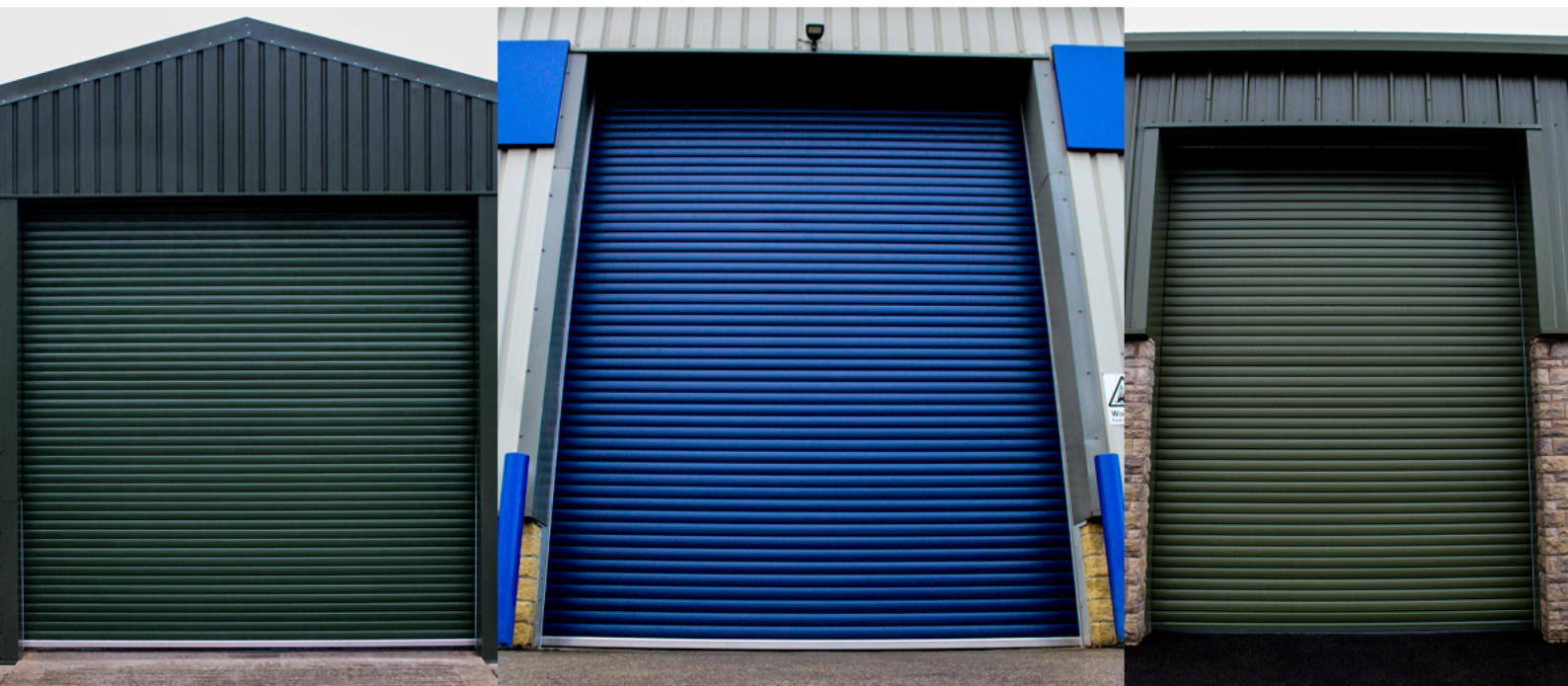
- 85mm galv reinforced guide with double brush strip as standard
- 75mm x 50mm x 5mm galv backing angles as standard
- 5mm mild steel laser cut end plates as standard
- Extruded aluminium bottom rail with rubber seal
- 13kg/m² steel
- Galvanised or aluzinc option (can be powder coated any colour)
- Range of laminated or plastisol colours
- Optional punched and glazed windows
- High resistance to wind (class 5)
- Similar weight per sq metre to traditional 20swg lath
- Stronger and quieter in operation than traditional steel lath



RANGE OF DRIVE OPTIONS

- Tube motor
- Direct drive
- Flange mount
- High speed inverter drive

can be used instead/as well as a high speed door providing fast access, insulation and security





- Heavy duty extruded aluminium bottom rail with weather seal
- Special air cushion rubber strip ensures solid seal door - floor
- Solid design provides increased level of security
- Outer lath incorporates 3 grooves for increased strength and visually pleasing external surface
- Fully assembled door adds improved level of strength/security
- All doors individually matched to customer specific requirements for colour and size



- 83 x 90mm roll formed guide rail
- Manufactured from 2.5mm galvanised steel
- Unique pre-punched guide rail offers easy fitting
- Slotted holes allow for adjustment during installation, guide will be cut in 500mm increments from 2500mm - 8000mm
- Snap-on brush carrier with fixed mohair reduces heat loss and ensures quiet operation
- Guides can be cut to specific lengths without hole as per customer request
- 90mm guide system can be used with or without wind locks
- Unique Top Hanger (Barrel Lath) suitable for 127 or 139mm barrel (5" or 5.5")
- Recessed hanger design conceals 10mm nut and bolt fixing
- Hanger profile protects lath during operation
- Supplied at 360mm with 11mm pre-drilled hole

95mm Barrel Wrap Chart

The below chart is calculated as follows

- (A) Opening height of the door
(B) Dimension from centre of barrel to fixing surface
tube size used in this calculation is 139.7mm

A	B
2500mm	180mm
3000mm	200mm
3500mm	210mm
4000mm	230mm
4500mm	230mm
5000mm	230mm
5500mm	250mm
6000mm	250mm

Acoustic Test

The sound reduction capability of the roller door has been tested and found to produce a level difference of 22dB inclusive of flanking effects at the test location

Air Permeability

Measured at 1.95 m³.h-1.m-2 @50Pa

Wind Test

Tested to category 5 wind load

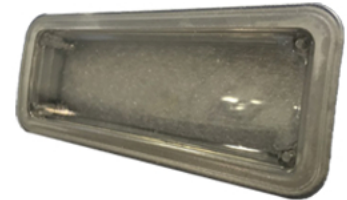
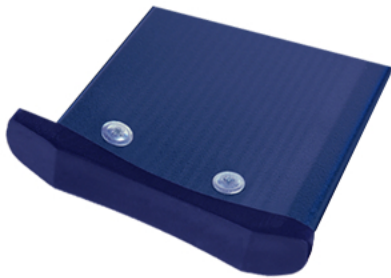
Thermal Test

Thermally tested assembled curtain to 3.3 W/m²K

Easy to install tap in end locks

End locks held in position by screw or rivets

Supplied in right and left hand pairs



Dimensions 170mm x 45mm

Windows may be placed across the lath at standard or can be strategically placed if desired at customers request

